

# YEAR 6 HOMEWORK

Homework due: 25.11.20

## Spellings

Use the 'Look, say, cover, write, check' method to practice these words containing the prefixes non-, ill- and co-.

Stage 6 Hyphens to join prefixes				Word List 6:1
A	'non' means 'not'. When added as a prefix it will give the word the opposite meaning.			
B	'ill' means 'bad' or 'badly'. It means the opposite of 'good' or 'done well'.			
C	The hyphen can be used to separate the vowels between prefix and the root word.			
non-stick	non-slip	non-drip	non-stop	non-fiction
ill-natured	ill-tempered	ill-timed	ill-gotten	ill-used
re-enter	re-employ	pre-arrange	co-own	co-operate

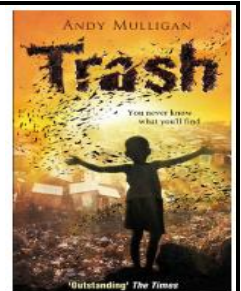
**Challenge:** Can you identify the meaning of these words and find synonyms and antonyms of each one?

## English

This week, the children have learned to use dialogue to show conversations between characters and advance the plot. Create a conversation between Raphael and Gardo when they are sifting through the trash and discover the wallet. Remember to include adverbs to describe how the characters are speaking; synonyms for said; facial expressions and body language of characters and actions.

### LI: To use dialogue and description to advance the plot

- Demonstrate an increased awareness of the character's voice through carefully selected vocabulary
- Open and close spoken words with inverted commas
- Begin each line of speech with a capital letter
- Include punctuation inside the inverted commas
- Use an appropriate speech verb to report who has spoken
- Begin a new line for a new speaker



Write the conversation between Gardo and Raphael. Remember to include the key events from the text.



Ensure you advance the plot of the text and show not tell; this should describe how the and how the person they are talking to responds.

**Consider:** body language, facial expressions, tone of voice, actions

including further description speaker acts when speaking

Why should we include a balance of dialogue and description within our narratives? What is the effect on the reader?



## Maths

This week in Maths, children have multiplied fractions by fractions. Use your learning to complete the questions below.

1.

$$\frac{1}{4} \times \frac{2}{3} =$$

$$\frac{2}{5} \times \frac{6}{7} =$$

$$\frac{4}{5} \times \frac{2}{3}$$

2. Match the calculations to the correct answers.

A.

$$\frac{2}{3} \times \frac{7}{8} =$$

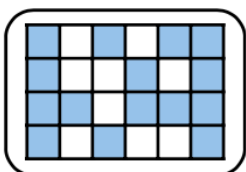
B.

$$\frac{3}{4} \times \frac{5}{6} =$$

C.

$$\frac{11}{12} \times \frac{7}{9} =$$

1.



2.

$$\frac{77}{108}$$

3.

$$\frac{7}{12}$$

3. Choose the correct number cards to complete the calculation below. Each number card can only be used once.

$$\frac{\boxed{\phantom{00}}}{3} \times \frac{5}{\boxed{\phantom{00}}} = \frac{\boxed{\phantom{00}}}{\boxed{\phantom{00}}}$$

**2**

**6**

**8**

**10**

**18**

**24**

### Reading

Remember to read for at least 30 minutes every day. Can you record any comments, questions or new and exciting words you have read in your reading journals?

### Times Tables

This half term our times tables foci are our 2, 4 and 8 times table, Can you test yourselves and see how many you know when setting yourself a 2 minute timer? Do you notice any patterns with these times tables?

If you would like to challenge yourself daily, take these 'Daily 10' tests on:

<https://www.topmarks.co.uk/maths-games/daily10>